

# **Changing The USB Driver**

## **For An Instrument**

**Prepared by:**  
**Newport Corporation**  
**1791 Deere Avenue**  
**Irvine, CA 92606**

<b>1</b>	<b>INTRODUCTION.....</b>	<b>1</b>
<b>2</b>	<b>WINDOWS XP.....</b>	<b>1</b>
2.1	RUNNING THE DEVICE MANAGER .....	1
2.2	LAUNCHING THE HARDWARE UPDATE WIZARD .....	2
2.3	NAVIGATING THROUGH THE HARDWARE UPDATE WIZARD .....	3
2.3.1	<i>The Welcome Screen</i> .....	3
2.3.2	<i>Installation Location</i> .....	4
2.3.3	<i>Search Option</i> .....	5
2.3.4	<i>Select Device Driver</i> .....	6
2.3.5	<i>The Finish Screen</i> .....	7
2.4	DRIVER VERIFICATION.....	8
<b>3</b>	<b>WINDOWS 7.....</b>	<b>10</b>
3.1	RUNNING THE DEVICE MANAGER .....	10
3.2	LAUNCHING THE UPDATE DRIVER SOFTWARE WIZARD.....	11
3.3	NAVIGATING THROUGH THE UPDATE DRIVER SOFTWARE WIZARD .....	12
3.3.1	<i>Search Option</i> .....	12
3.3.2	<i>Browse Option</i> .....	13
3.3.3	<i>Select Device Driver</i> .....	14
3.3.4	<i>The Finish Screen</i> .....	15
3.4	DRIVER VERIFICATION.....	16

## 1 Introduction

Changing the USB driver for an instrument is an action that associates driver software that is already installed on the PC with an instrument that is currently powered on and connected to the PC. In order to do this the Update Wizard must be run. The Update Wizard is part of the Windows Device Manager. Each Windows operating system has a slightly different user interface for accomplishing this task.

## 2 Windows XP

The following steps show how to change the USB driver (e.g. The Newport USB driver (Jungo), NI VISA driver, etc.) that is being used with a particular instrument. The USB driver software must already be installed on the PC before it can be selected in the Device Manager.

### 2.1 Running The Device Manager

To access Device Manager, use any of the following methods:

- Click **Start**, click **Run**, and then type **devmgmt.msc**.
- Right-click **My Computer**, click **Manage**, and then click **Device Manager**.
- Right-click **My Computer**, click **Properties**, click the **Hardware** tab, and then click **Device Manager**.
- Type the following command at a command prompt: **start devmgmt.msc**

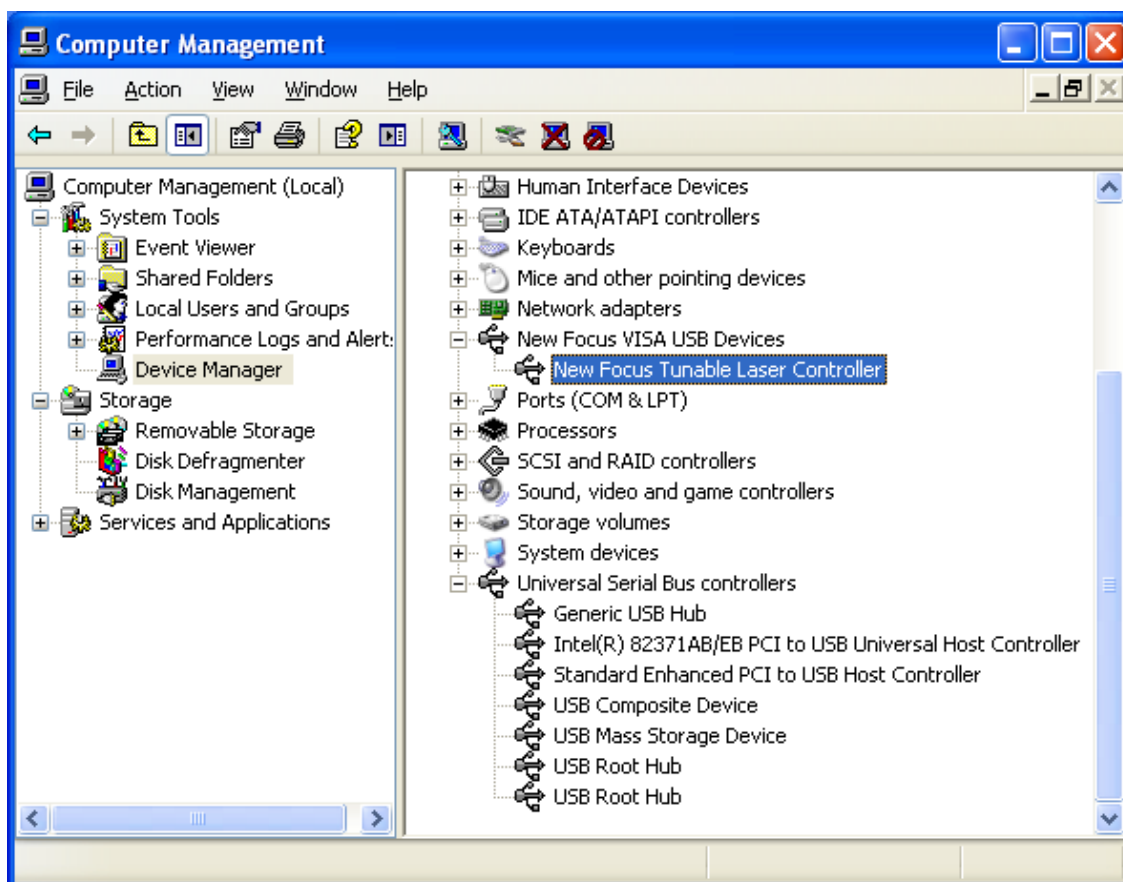
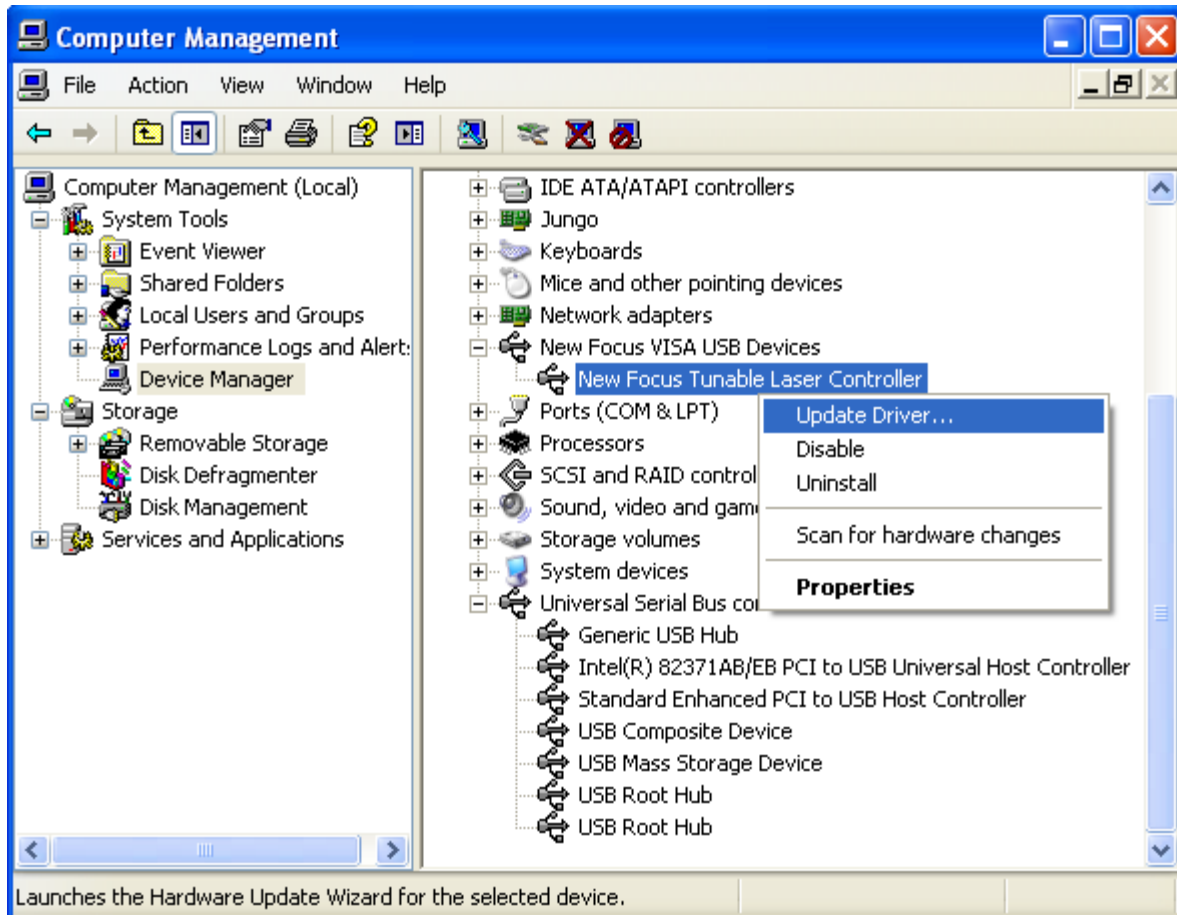


Figure 1 – XP Device Manager

## 2.2 Launching the Hardware Update Wizard

Click the plus sign of a parent node to expand it and display its child nodes beneath it. Then right-click an instrument to select it and to display its context menu. Choose “Update Driver...” to launch the Hardware Update Wizard.



**Figure 2 - How To Launch The Hardware Update Wizard In XP**

## 2.3 Navigating Through The Hardware Update Wizard

There are many ways to select a driver for an instrument in the Hardware Update Wizard, but the easiest way to select a specific driver is to follow the steps below.

### 2.3.1 The Welcome Screen

On the welcome screen, select “No, not this time” and then click the Next button.



Figure 3 - XP Hardware Update Wizard Welcome Screen

### 2.3.2 Installation Location

Click “Install from a list or specific location (Advanced)” and then click the Next button.

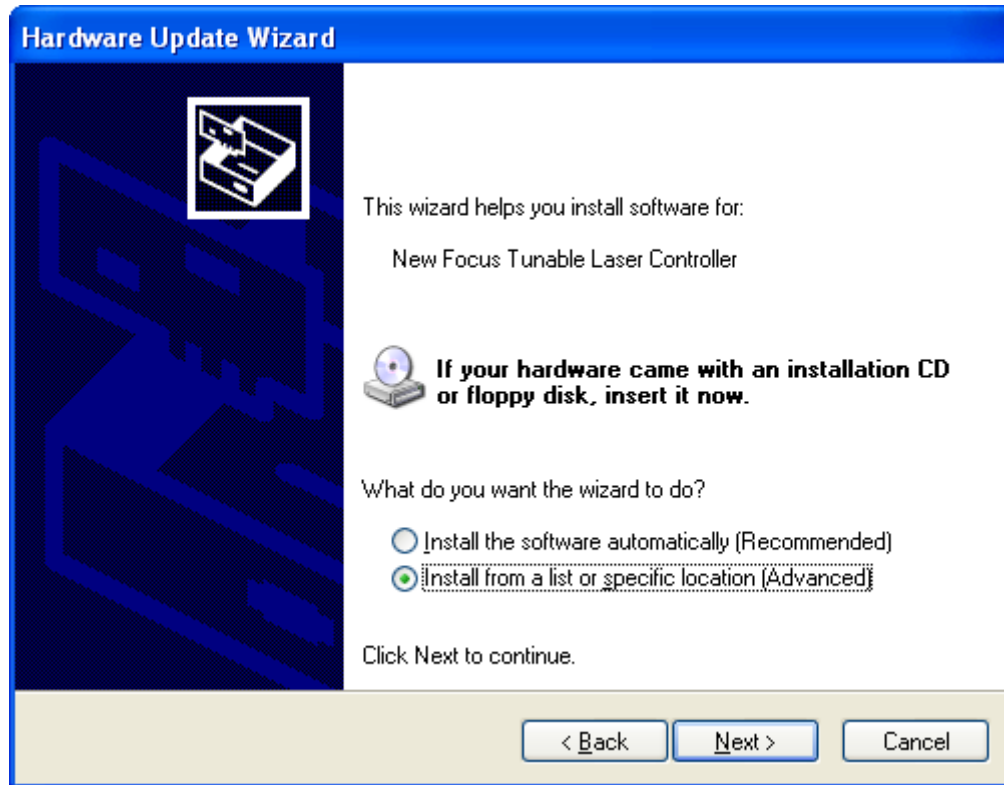
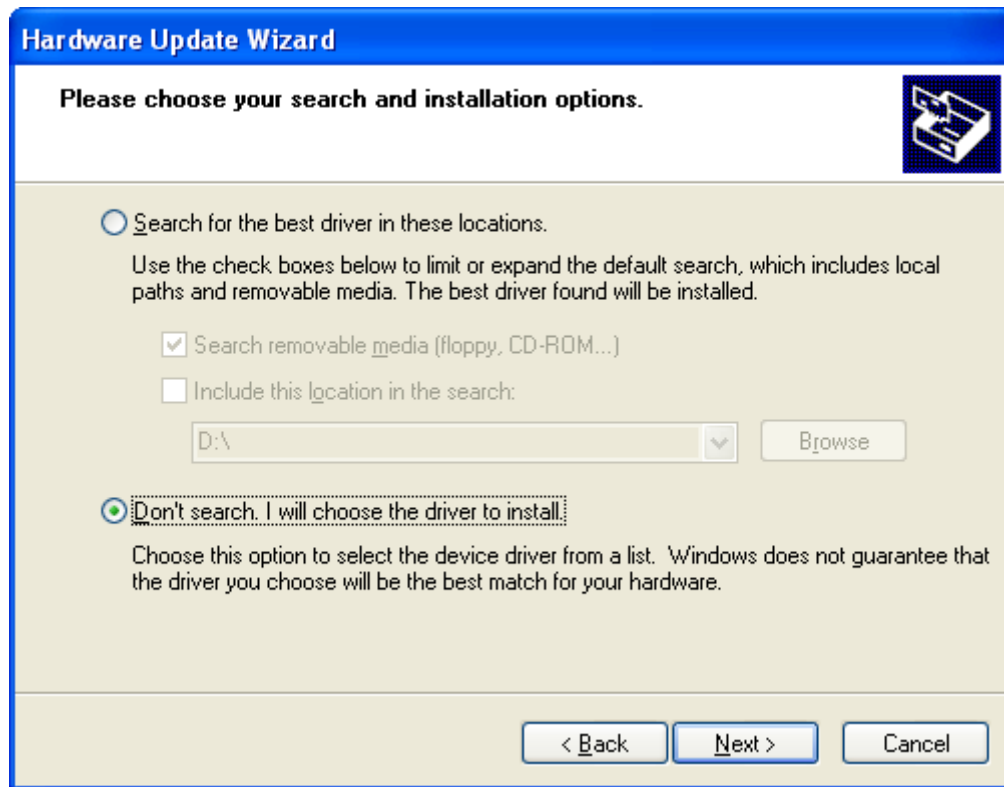


Figure 4 - XP Hardware Update Wizard Installation Location

### 2.3.3 Search Option

Click “Don’t search. I will choose the driver to install and then click the Next button.



**Figure 5 - XP Hardware Update Wizard Search Option**

### 2.3.4 Select Device Driver

Click the first driver in the list and then click the Next button. If a security alert message about the driver software is displayed, then allow the driver software to be installed.

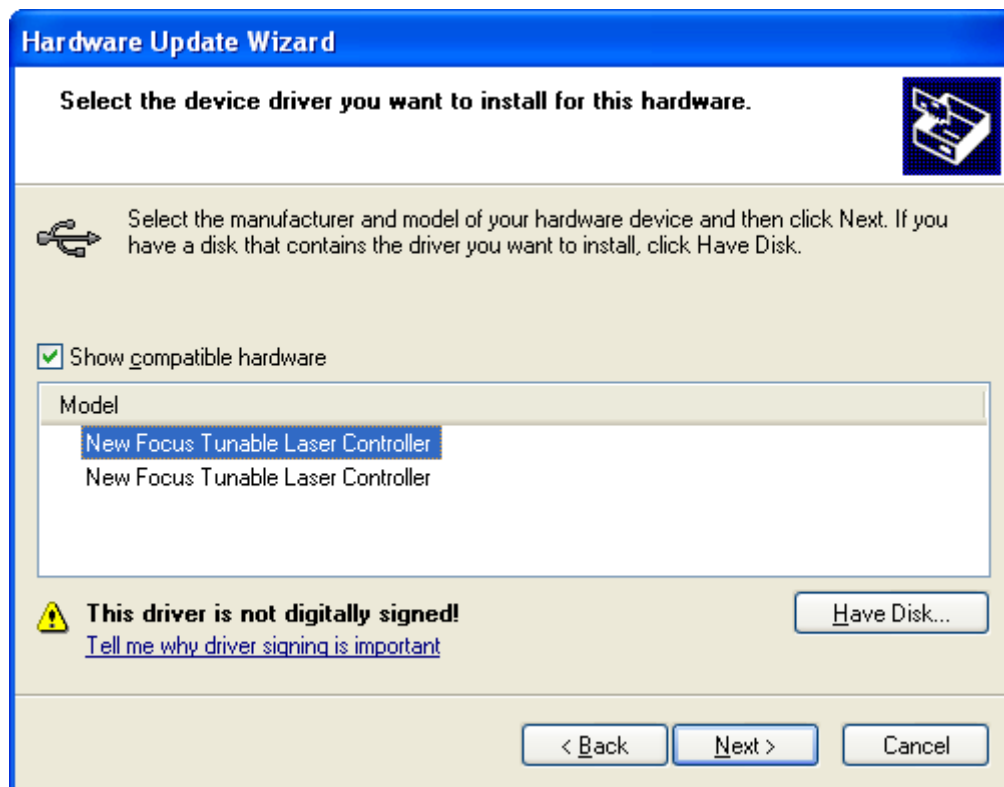
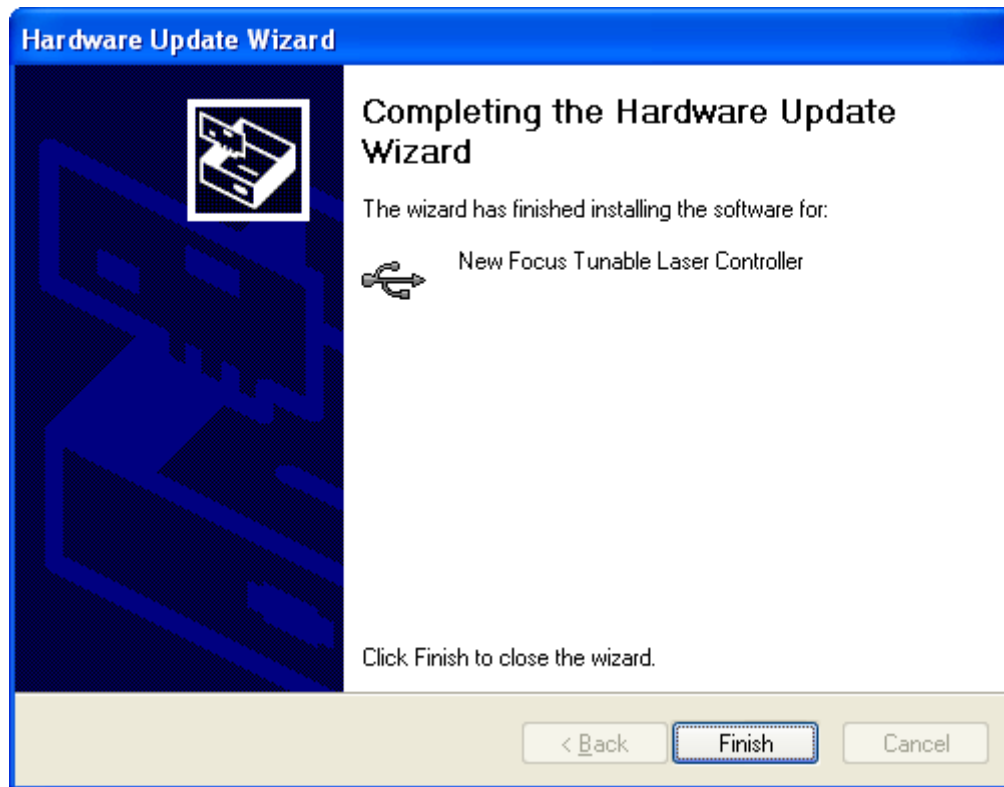


Figure 6 - XP Hardware Update Wizard Select Device Driver



### 2.3.5 The Finish Screen

Click the Finish button.



**Figure 7 - XP Hardware Update Wizard Finish Screen**

## 2.4 Driver Verification

Verify that the proper driver has been selected. If the instrument appears in the Device Manager as a child node of a node that is labeled “Newport VISA USB Devices” or “New Focus VISA USB Devices” (as shown in figure 1 and figure 2), then the instrument is using the VISA driver. If the label of the parent node is “Universal Serial Bus controllers” (as shown below) then right-click the instrument and choose “Properties” from its context menu.

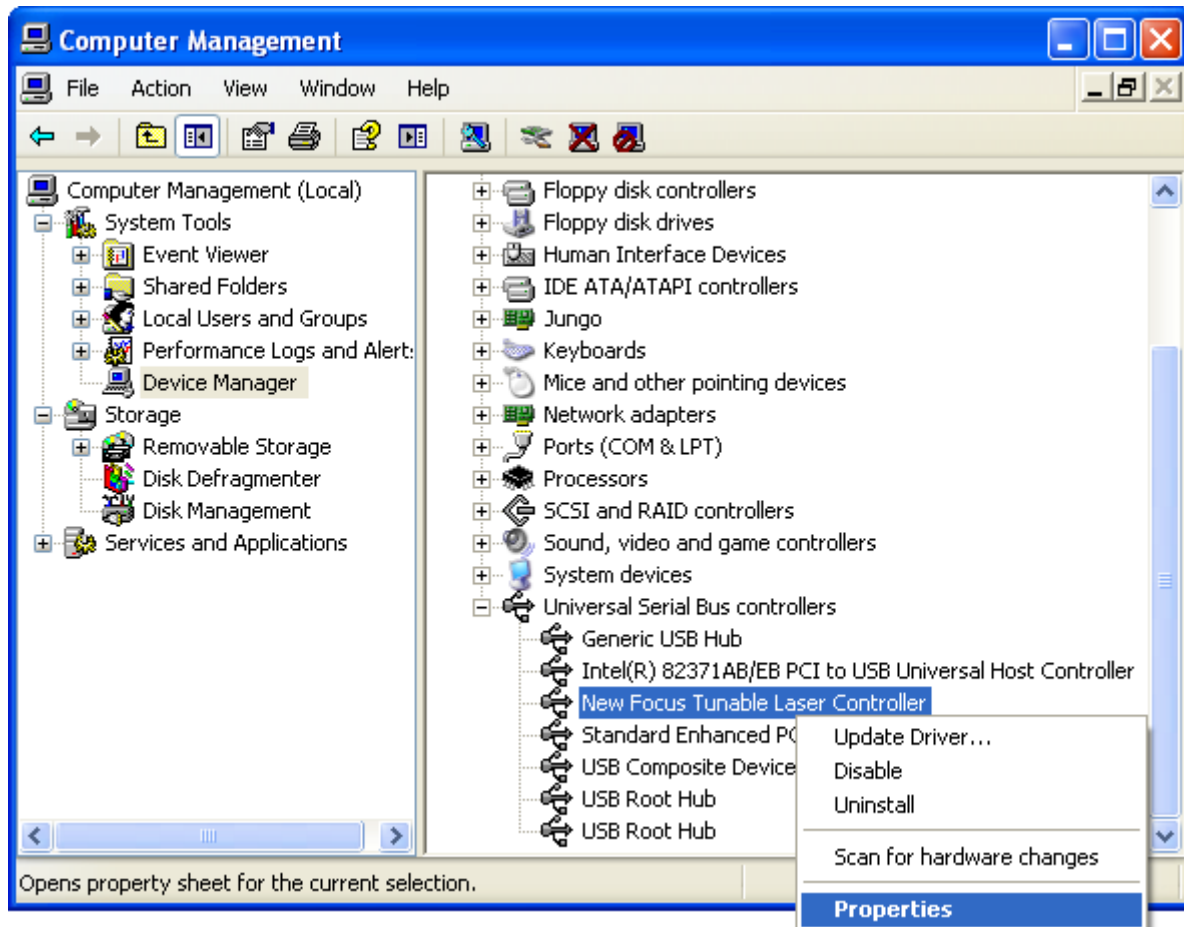
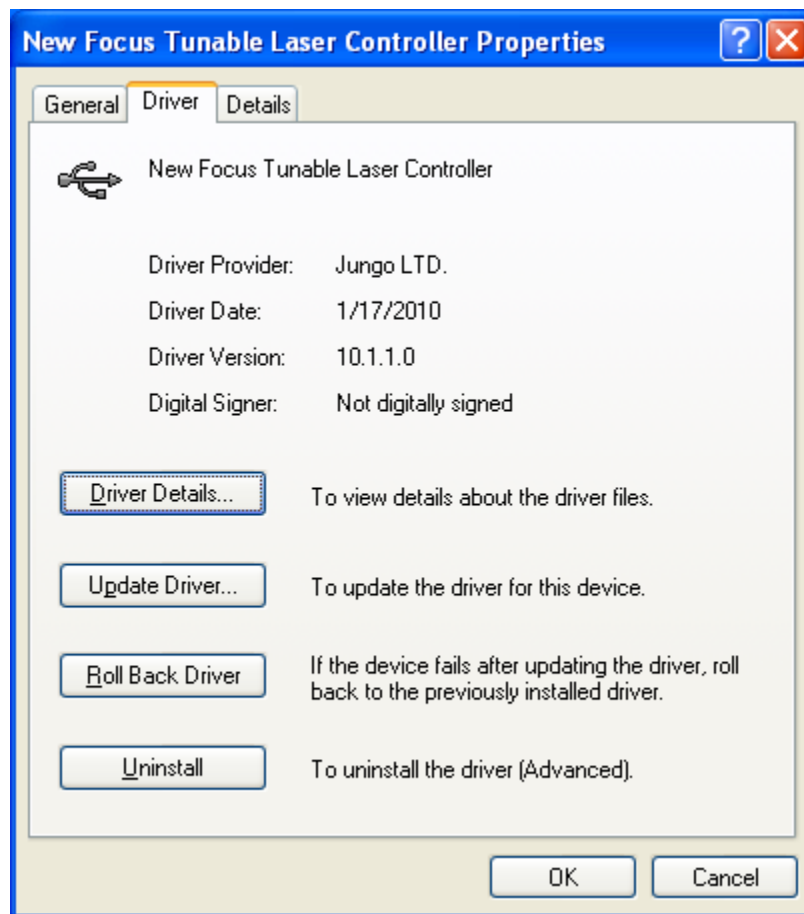


Figure 8 - XP Device Properties

Click the Driver tab and determine the driver provider. If the driver provider is Jungo LTD, then the instrument is using the Newport USB Driver. If the instrument is still not using the proper driver then repeat steps 2.2 through 2.4 and on step 2.3.4 select the next driver in the list.



**Figure 9 - XP Driver Tab**

### 3 Windows 7

The following steps show how to change the USB driver (e.g. The Newport USB driver (Jungo), NI VISA driver, etc.) that is being used with a particular instrument. The USB driver software must already be installed on the PC before it can be selected in the Device Manager.

#### 3.1 Running The Device Manager

To access Device Manager, use any of the following methods:

- Click **Start**, click **Control Panel**, click **System and Security**, and then under **System** click **Device Manager**.
- Click **Start**, right-click **My Computer**, click **Manage**, and then click **Device Manager**.
- Click **Start**, right-click **My Computer**, click **Properties**, and then click **Device Manager**.
- Click **Start**, type “**Device Manager**” in the Search programs and files box.

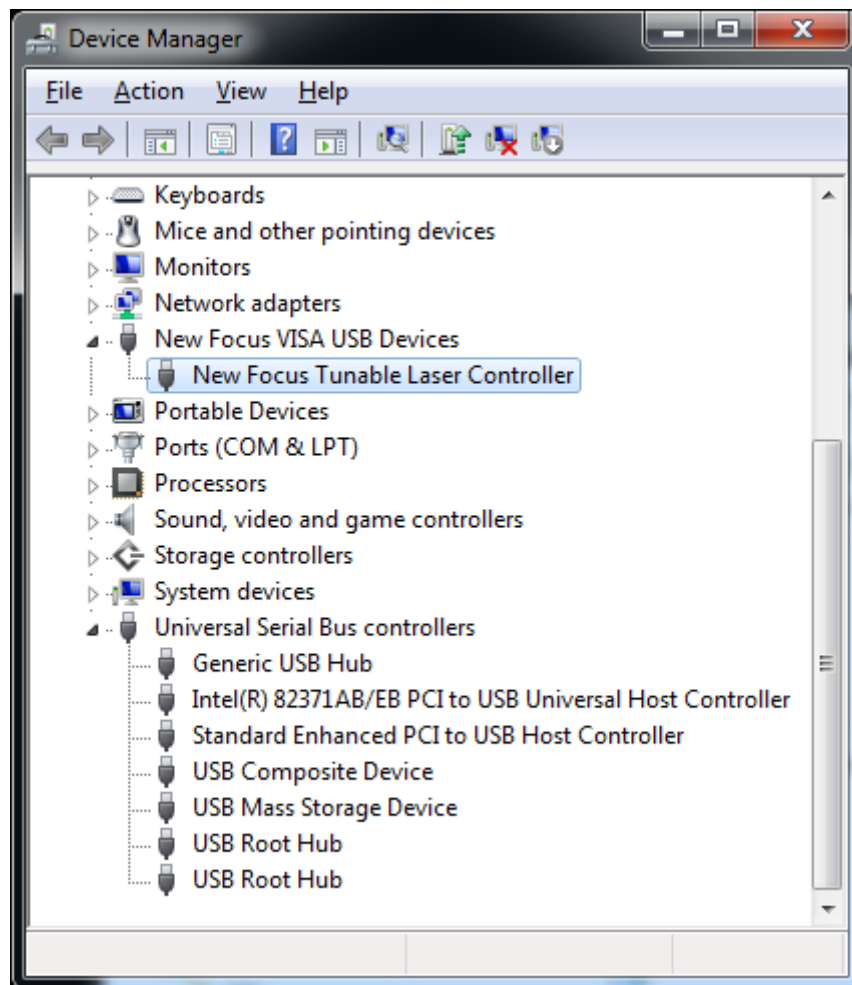


Figure 10 - Win7 Device Manager

### 3.2 Launching the Update Driver Software Wizard

Click the triangle of a parent node to expand it and display its child nodes beneath it. Then right-click an instrument to select it and to display its context menu. Choose “Update Driver Software...” to launch the Update Driver Software Wizard.

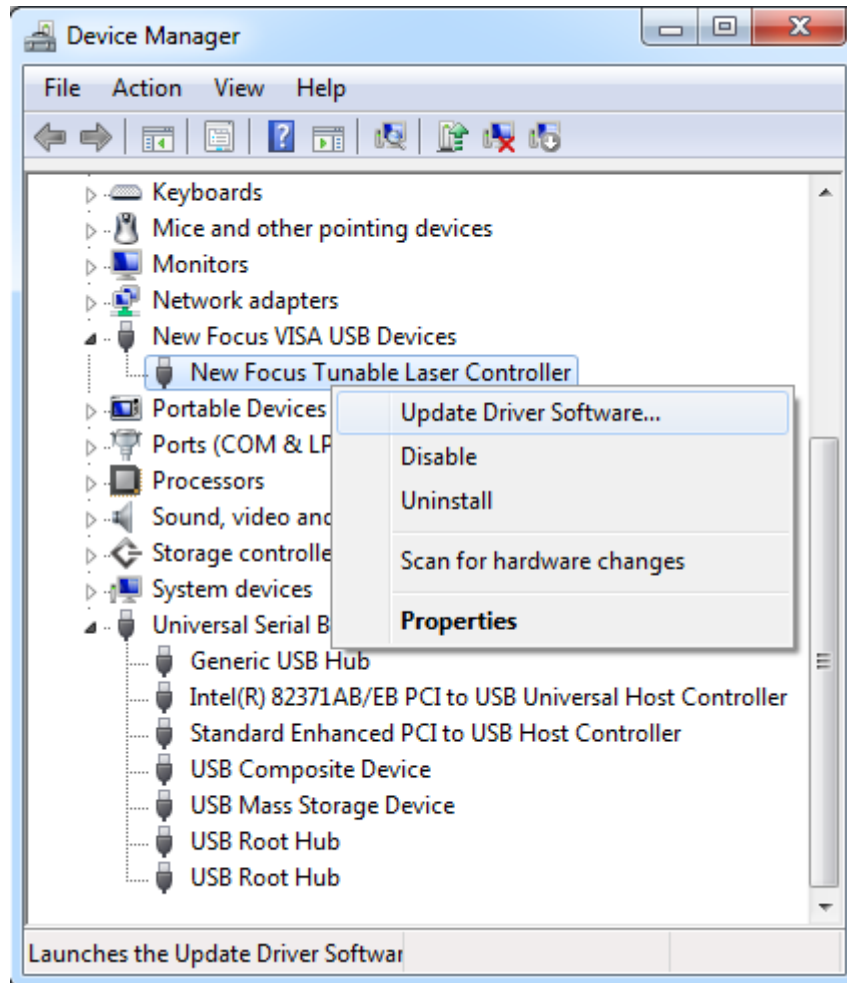


Figure 11 - How To Launch The Update Driver Software Wizard In Win7

### 3.3 Navigating Through The Update Driver Software Wizard

There are many ways to select a driver for an instrument in the Update Driver Software Wizard, but the easiest way to select a specific driver is to follow the steps below.

#### 3.3.1 Search Option

Click “Browse my computer for driver software”.

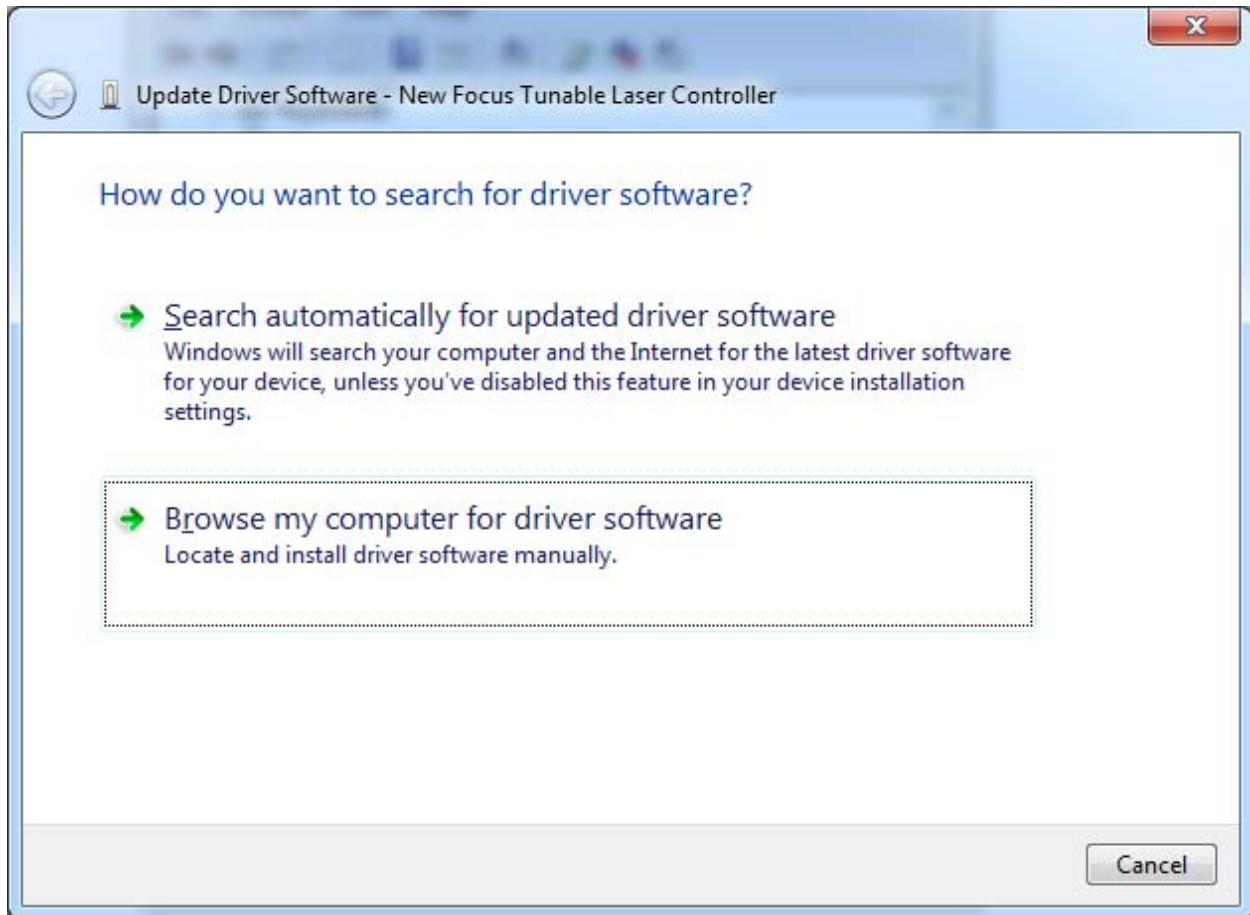


Figure 12 - Win7 Update Driver Software Wizard Search Option

### 3.3.2 Browse Option

Click “Let me pick from a list of device drivers on my computer”.



**Figure 13 - Win7 Update Driver Software Wizard Browse Option**

### 3.3.3 Select Device Driver

Click the first driver in the list and then click the Next button. If a security alert message about the driver software is displayed, then allow the driver software to be installed.

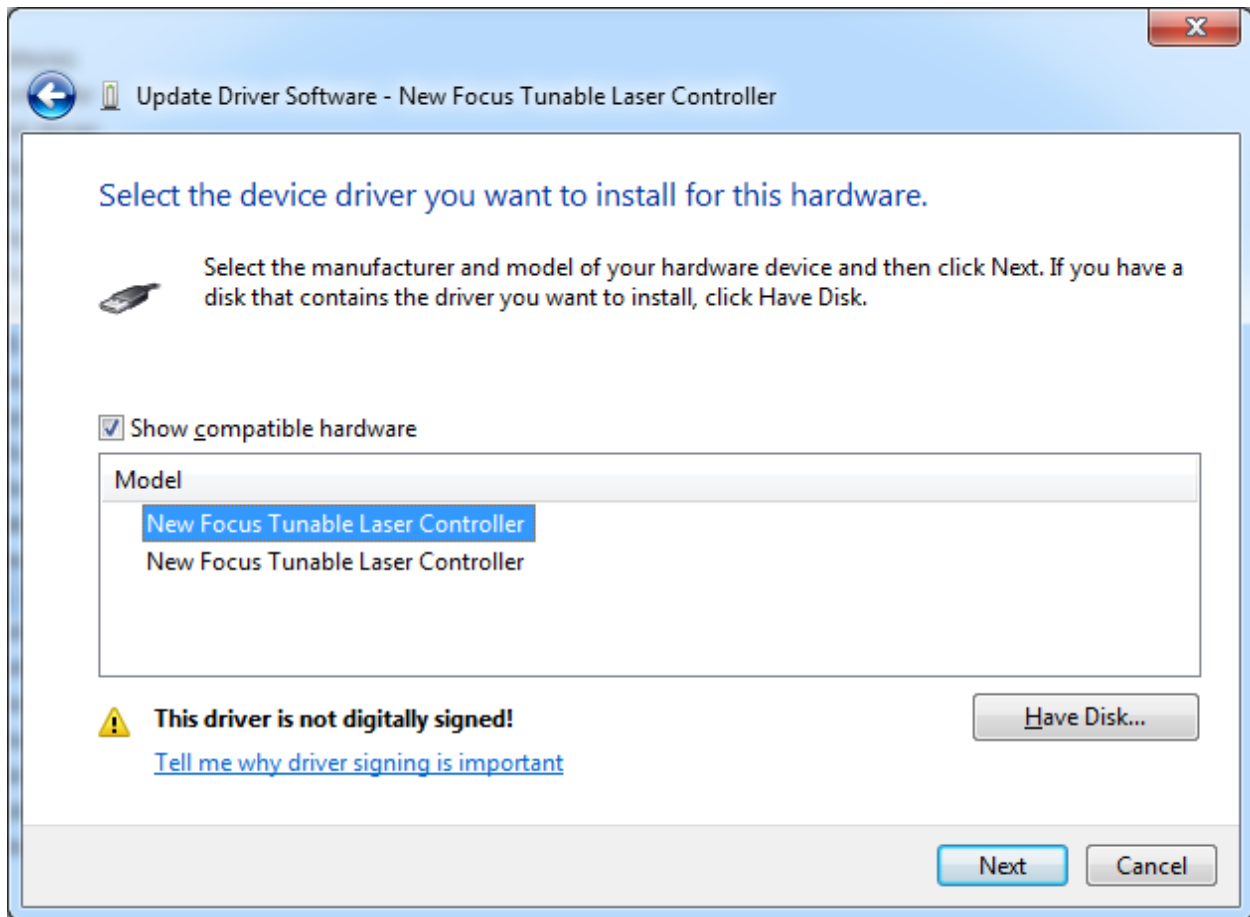
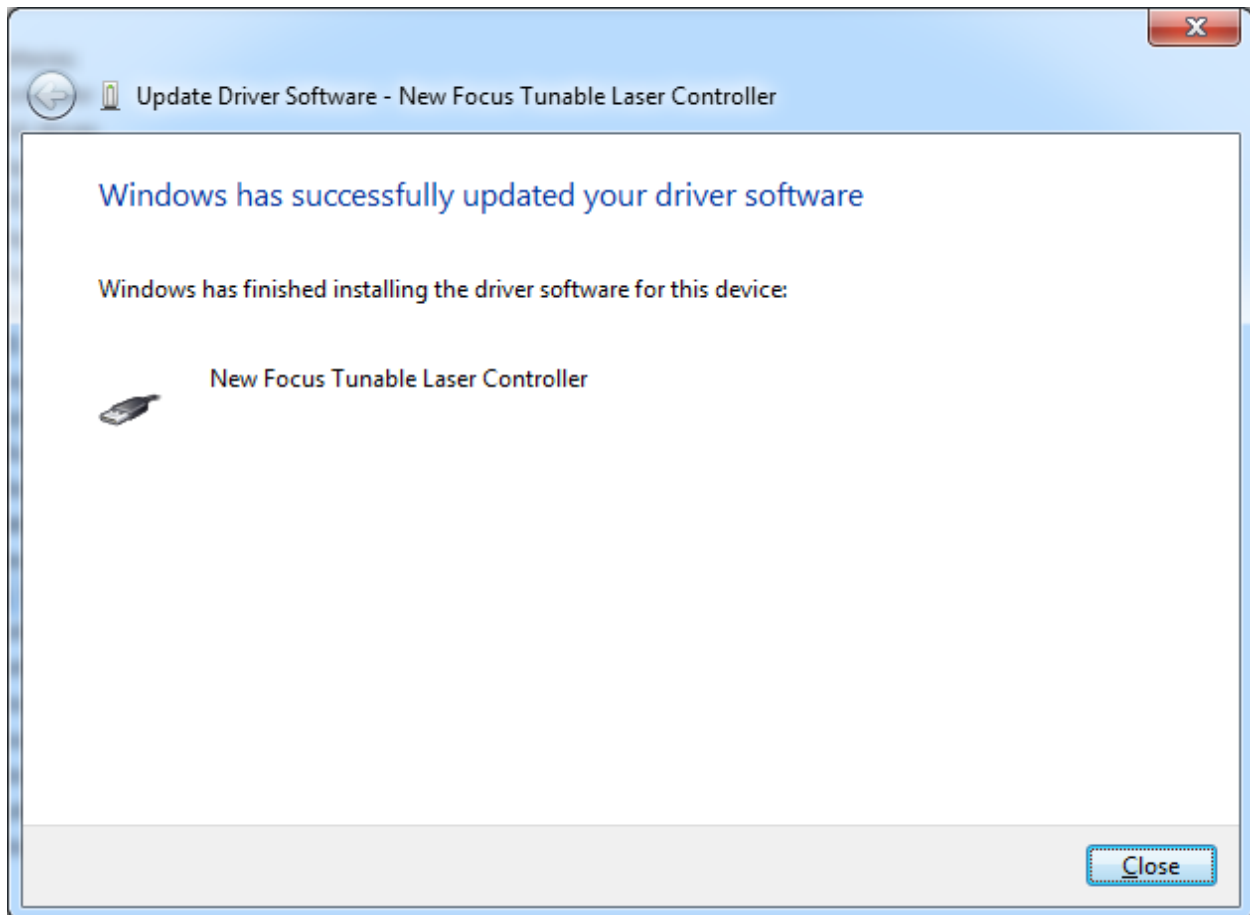


Figure 14 - Win7 Update Driver Software Wizard Select Device Driver



### 3.3.4 The Finish Screen

Click the Close button.



**Figure 15 - Win7 Update Driver Software Wizard Finish Screen**

### 3.4 Driver Verification

Verify that the proper driver has been selected. If the instrument appears in the Device Manager as a child node of a node that is labeled “Newport VISA USB Devices” or “New Focus VISA USB Devices” (as shown in figure 10 and figure 11), then the instrument is using the VISA driver. If the label of the parent node is “Universal Serial Bus controllers” (as shown below) then right-click the instrument and choose “Properties” from its context menu.

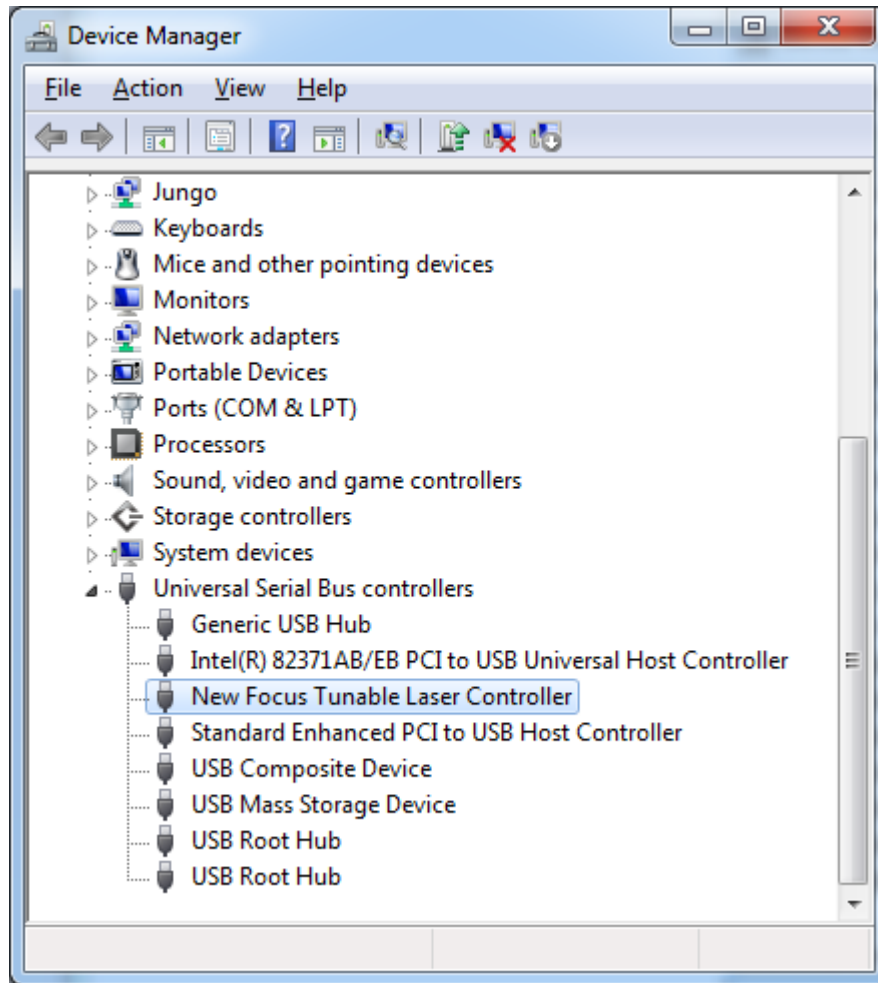
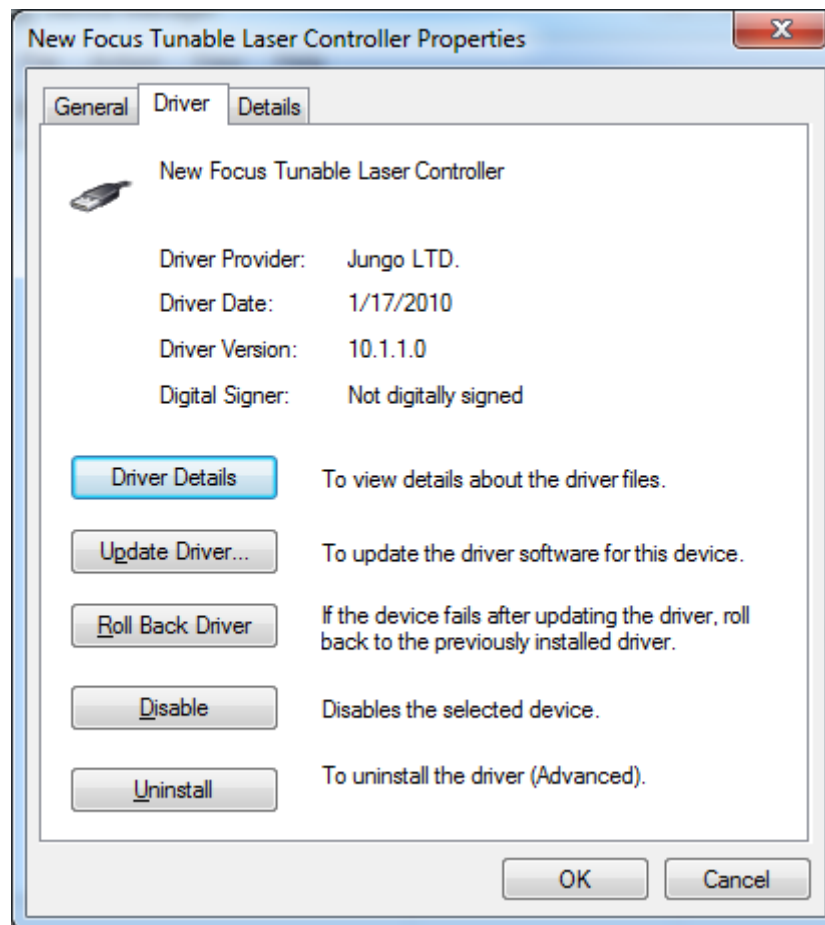


Figure 16 - Win7 Device Properties

Click the Driver tab and determine the driver provider. If the driver provider is Jungo LTD, then the instrument is using the Newport USB Driver. If the instrument is still not using the proper driver then repeat steps 3.2 through 3.4 and on step 3.3.3 select the next driver in the list.



**Figure 17 - Win7 Driver Tab**