

Compact Bi-Directional Absolute Positioning Mirror Mount

CONEX-AG-M100D



The CONEX-AG-M100D is a piezo motor actuated absolute positioning mirror mount with a dedicated closed-loop controller/driver. For out-of-the box control, the CONEX-AGAP controller is preconfigured and delivered with an Agilis AG-M100D mirror mount with a built-in, 2-axis, absolute, angular position sensor.

High Angular Stability

At the desired position, the angular stability of the AG-M100D absolute position mirror mount is the same as an ULTIMA mirror mount. Its thermal stability is in the range of $5 \mu\text{rad}/^\circ\text{C}$.

Closed Loop Absolute Position Adjustment Capability

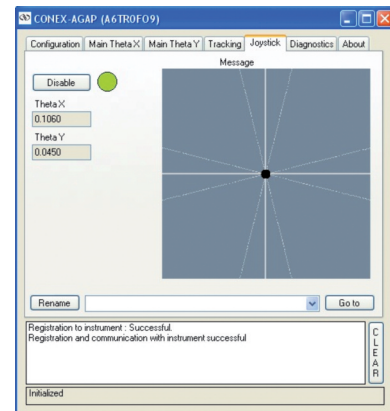
This mirror mount features an innovative miniature absolute position sensor. Within a footprint similar to the 1 inch mirror mount of the Agilis family, it offers an angular positioning capability of 0.001° , even after a system reset. This position recovery capability is a key feature of this the CONEX-AGAP and the combination of the closed-loop algorithm with the absolute position sensor, it provides bi-directional repeatability of 0.01° .

Fine Adjustment Performance

Like its controller, the mirror mount is very compact, but is capable of $\pm 0.75^\circ$ travel on both axes with an angular opened loop adjustment sensitivity better than $2 \mu\text{rad}$. For closed loop positioning, the MIM is 0.001° .



- Very compact size
- Repeatable positioning
- Recoverable position
- Set-and-forget long-term stability

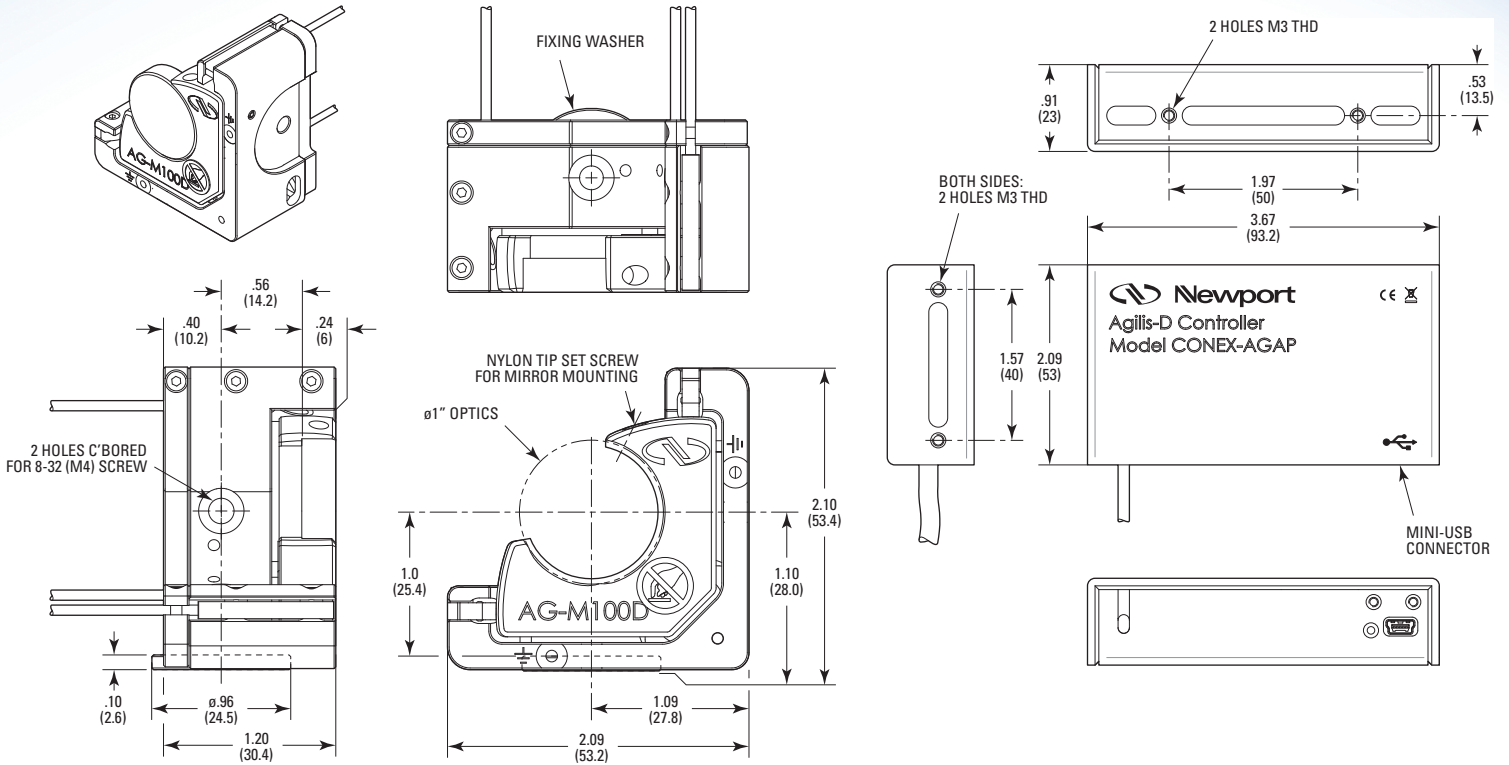


GUI for 2-axis positioning.

SPECIFICATIONS

Dual axis travel range	$\pm 0.75^\circ$
Closed-loop MIM	0.001°
Open-loop MIM	$2 \mu\text{rad}$
Bi-directional repeatability	0.01°
Maximum speed	$>0.4^\circ/\text{s}$
Thermal stability	$5 \mu\text{rad}/^\circ\text{C}$

DIMENSIONS

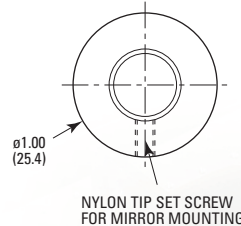
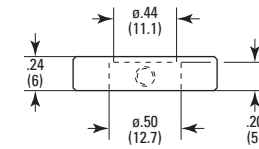


ORDERING INFORMATION

Model	Description
CONEX-AG-M100D	Piezo Motor Mirror Mount, Absolute Positioning, Integrated Controller

ACCESSORIES

Model	Description
UPA1-5	Mirror Mount Adapter, 25.4 mm to 12.7 mm Diameter, For Ultima



Newport Corporation, Global Headquarters
1791 Deere Avenue, Irvine, CA 92606, USA

PHONE: 1-800-222-6440 1-949-863-3144 FAX: 1-949-253-1680 EMAIL: sales@newport.com
Complete listings for all global office locations are available online at www.newport.com/contact

www.newport.com