

XPS Remote Control Firmware Download

The XPS Remote Control (XPS-RC) firmware is downloadable via a specific download RS232 port (the connector is on the left side of the RC, that is covered with a plastic black hood). A male-female non-crossed (pin to pin) RS232 cable is needed to download the firmware to the Remote Control.

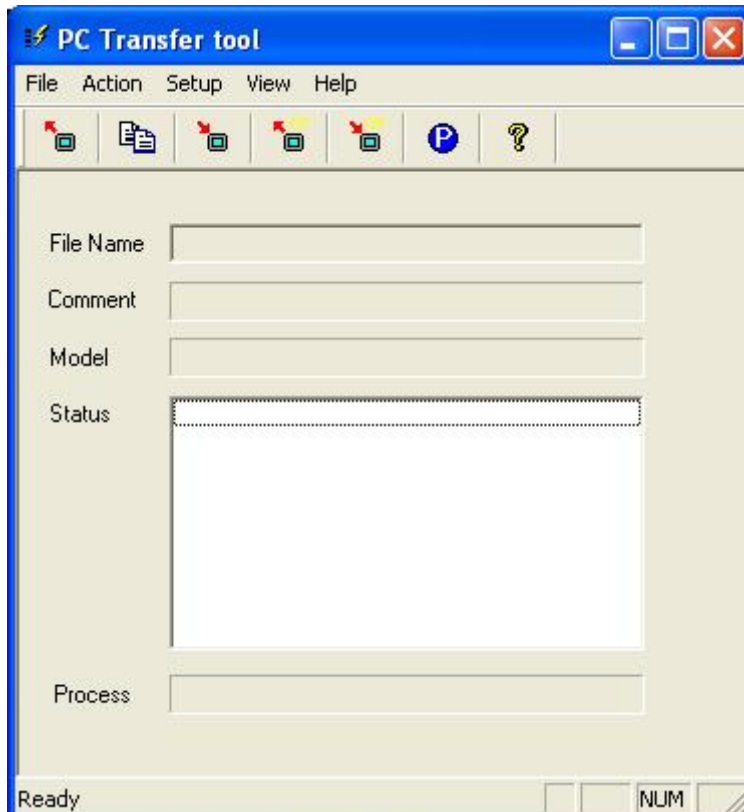
(Photo of the specific download connector)



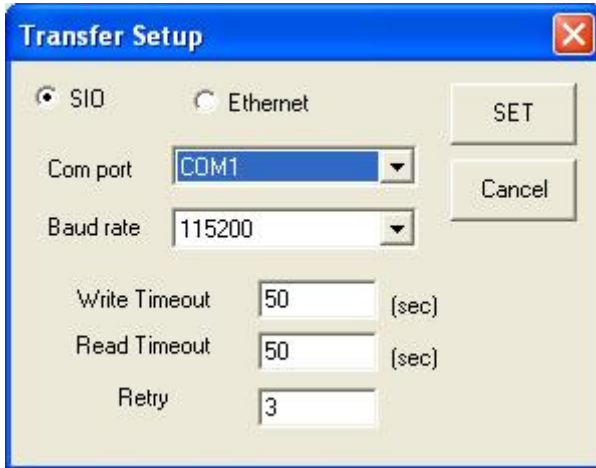
Before download the firmware to the Remote Control (XPS-RC) :

- Connect the PC (COM1 or COM2 port) and the Remote Control with a male-female non-crossed RS232 cable.
- The download utility is **GPMNT.EXE**.
- Copy the file **bkC341.MEM** (XPS-RC firmware file) in the directory where the **GPMNT.EXE** utility is located.

Double click on the **GPMNT.EXE** to start download.

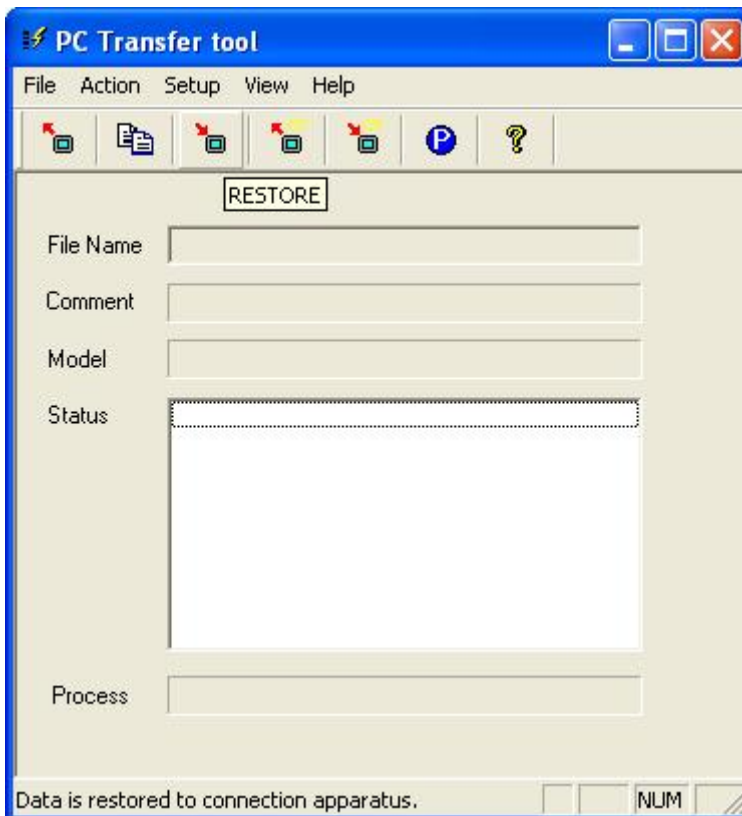


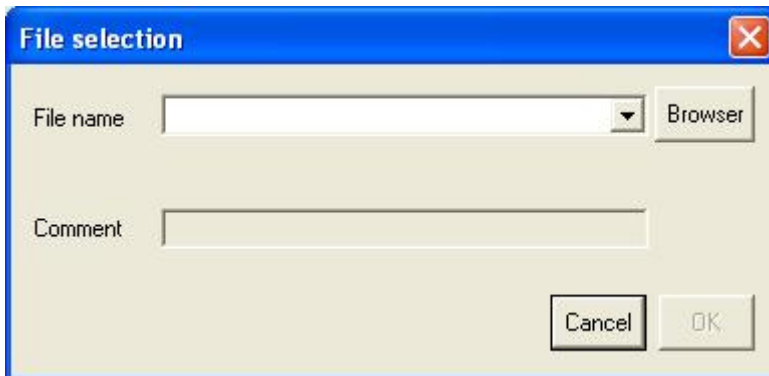
Click on **Setup / Transfert Setup** menu to configurate the communication between the XPS-RC and the PC.



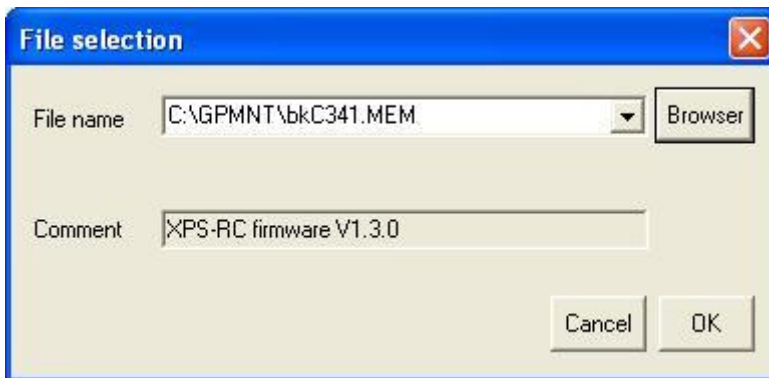
Select the Port corresponding to the using PC port number. Click on the SET button to memorize the new configuration and return to the principal download window :

Click on the **RESTORE** icon to download the RC firmware (**bkC341.MEM file**) into the XPS-RC.

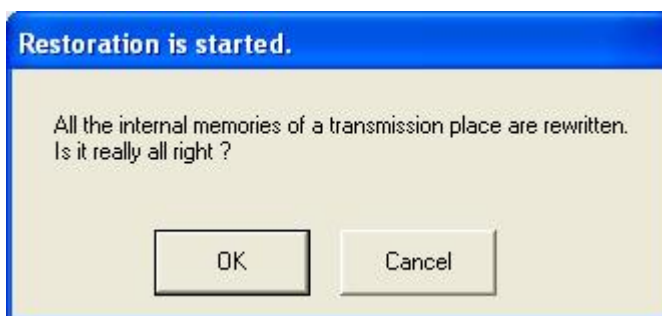




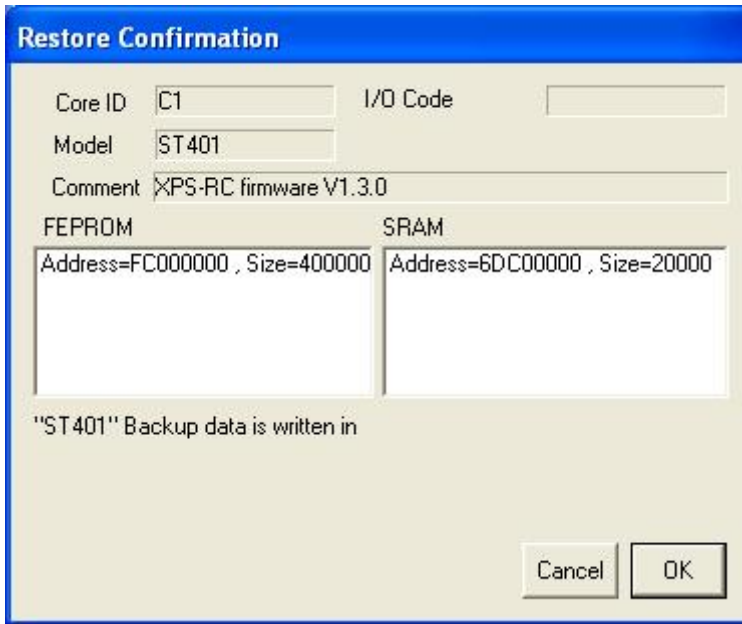
Click now on the **Browser** button to select the firmware file .



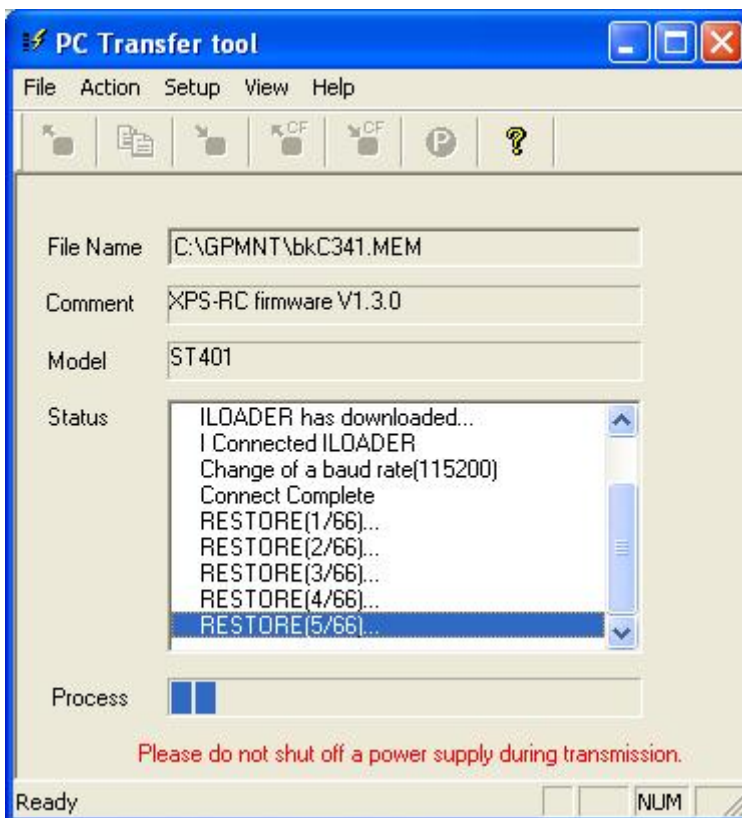
Click on the OK button to accept and return.



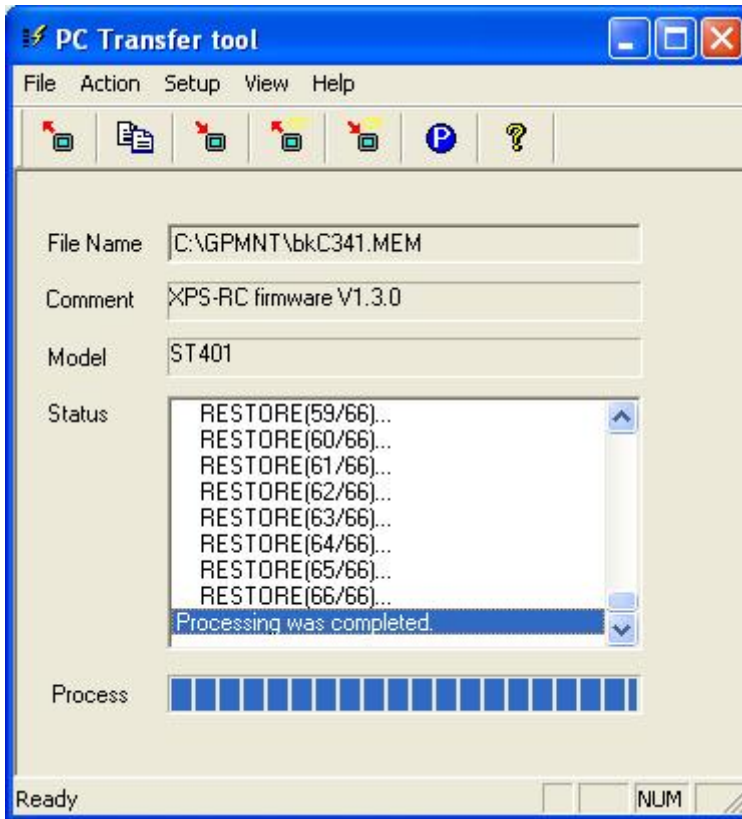
Click on the OK button.



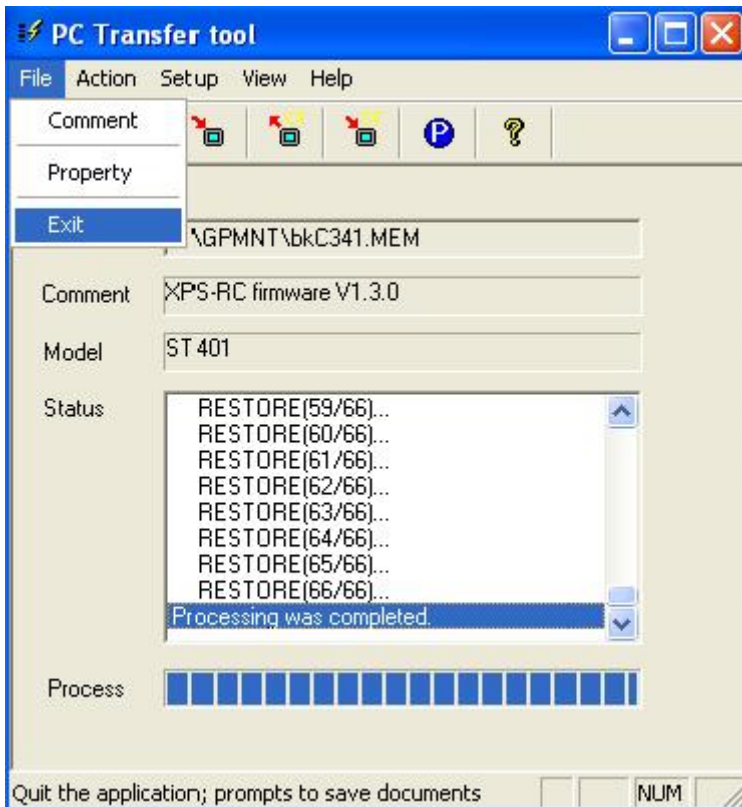
Click on now the OK button.



The firmware download is now being in progression.
At the end of the firmware download, the following message appears :



Click now on File / Exit menu to quit the GPMNT firmware download.



Take a look now at the XPS-RC screen :

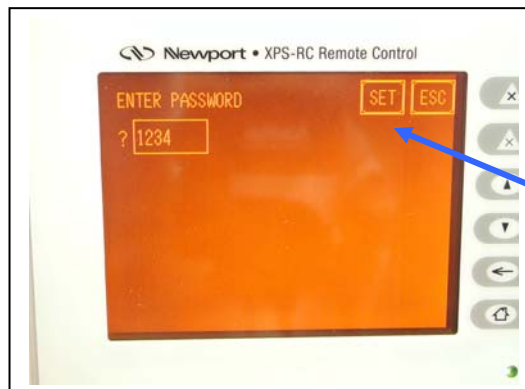


On the XPS-RC screen, enter the following password :

1234



and press on SET button to valid.



Press the RUN button to valid all and quit.XPS-RC setup mode. The firmware download procedure has now finished.

