



HXP

Hexapod Motion Controller



Controller GUI Manual

Intaller Pack Version #30002

©2018 by Newport Corporation, Irvine, CA. All rights reserved.

Original instructions.

No part of this document may be reproduced or copied without the prior written approval of Newport Corporation. This document is provided for information only, and product specifications are subject to change without notice. Any change will be reflected in future publishings.

Table of Contents

1.0 Introduction	1
1.1 Purpose	1
1.2 Overview	1

2.0 Running Controller GUI.....	1
--	----------

3.0 User Interface.....	2
3.1 Main page	2
3.2 About	3
3.3 HXP Web Site.....	3

Service Form	5
---------------------------	----------



Hexapod Motion Controller HXP

1.0 Introduction

1.1 Purpose

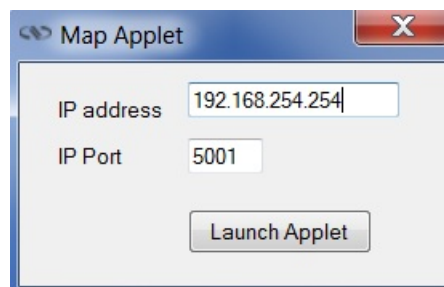
The purpose of this document is to provide instructions on how to use the HXP Controller GUI.

1.2 Overview

The HXP Controller GUI is a software application that has a graphical user interface (GUI) which allows the user to interact with the HXP controller.

2.0 Running Controller GUI

1. Open Controller GUI and input HXP IP address.
2. Click Launch Applet.



3.0 User Interface

3.1 Main page

The Main page allows opening a web browser to access to the HXP web site specified by a TCP IP address and a port number.

The InstrumentKey or the Controller GUI name is displayed in the title bar.

For an HXP instrument, the InstrumentKey is composed of the address and the port number.



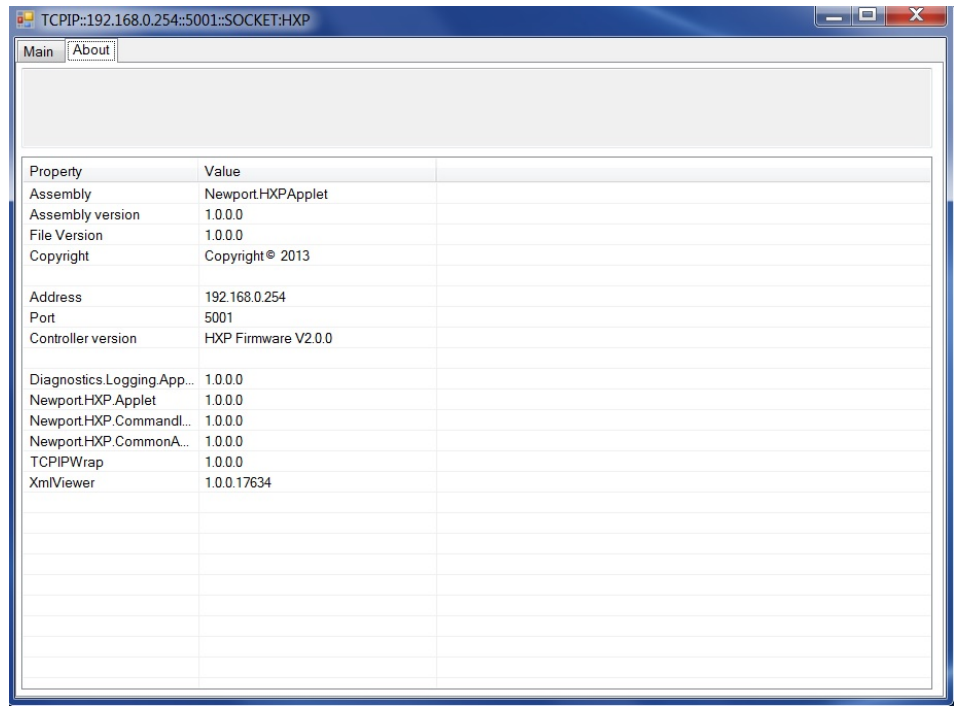
The first web page is a login page. There are two options to log-in to the HXP controller: As “User” or as “Administrator”.

Users can log-in only with User rights. Administrators can log-in with User or with Administrator rights. When logged-in with Administrator rights, you have an extended set of tools available.

The predefined user has the log-in name **Anonymous**, Password **Anonymous**. The predefined Administrator has the log-in name **Administrator**, Password **Administrator**. Both, the Log-in name and the password are case sensitive.

3.2 About

The About tab allows to display information about the Controller GUI and the connected instrument. It displays the Controller GUI name, version, and copyright information.



3.3 HXP Web Site

The HXP software tools provide users a convenient access to the most common features and functions of the HXP controller. All software tools are implemented as a web interface. The advantage of a web interface is that it is independent from the user's operating system and doesn't require any specific software on the host PC.

NOTE

The HXP web site is described in the “Software tools” section from the HXP User’s manual.



Visit Newport Online at:
www.newport.com

North America & Asia

Newport Corporation
1791 Deere Ave.
Irvine, CA 92606, USA

Sales

Tel.: (800) 222-6440
e-mail: sales@newport.com

Technical Support

Tel.: (800) 222-6440
e-mail: tech@newport.com

Service, RMAs & Returns

Tel.: (800) 222-6440
e-mail: service@newport.com

Europe

MICRO-CONTROLE Spectra-Physics S.A.S
9, rue du Bois Sauvage
91055 Évry CEDEX
France

Sales

Tel.: +33 (0)1.60.91.68.68
e-mail: france@newport.com

Technical Support

e-mail: tech_europe@newport.com

Service & Returns

Tel.: +33 (0)2.38.40.51.55

